

Japanese culture is reflected in the diverse ways in which it is studied and researched at Oxford.

Alongside its rich histories, literatures and languages, Japanese culture and arts will feature as part of a wide-reaching festival in late 2021, curated by the University of Oxford as part of the Humanities Cultural Programme.

Showcasing the work of creative performers and artists, our festival will have a global online reach as we celebrate the arts and culture of Japan.



CALLIGRAPHY WORKSHOP
 with Kaoru Akagawa
Tuesday 19 October
2-5pm
Pitt Rivers Museum

Kaoru Akagawa, artist and Master of Japanese calligraphy, keeps alive, through her contemporary interpretation and border-crossing work, an ancient script, kana shodo, sometimes referred to as "Woman hand".

Kaoru will welcome a group in person and teach them about this process. Group members will also have the opportunity to create their own work using traditional materials.



EMPTY SHOP WINDOWS
 by Eiko Soga
Monday 8 November –
Friday 19 November
95 Gloucester Green, Oxford

This installation includes video projections in the shop windows of empty shops in Oxford city centre by the Artist Eiko Soga

Eiko will share her work, which combines video, poetry, and ethnography, based on an engagement with the value system of the Ainu, the indigenous people of Northern Japan.

Eiko has spent time researching in Samani, Hokkaido, on how best to connect with and develop this work.



JAPAN FILM SEASON
Throughout November
Ultimate Picture Palace
Live silent film Benshi performance
10 November

A series of film showings of classic and contemporary films from Japan throughout November, with pre-show talks by leading experts, and a special Benshi performance to accompany a silent film.

Akira Kurosawa
 Throne of Blood /Seven Samurai/ Yojimbo

Yasujiro Ozu's Trilogy
 Late Spring/Early Summer/ Tokyo Story

Sci-fi Anime Classics
 Akira/Ghost in the Shell/Paprika

Modern Master: 30 Years of Hirokazu Kore-eda
 After Life/Still Walking/ Shoplifters



AFTER HOURS:
 Japan Late at Ashmolean
Friday 5 November
5-8pm
The Ashmolean Museum

An exciting 'after hours' programme of activities at the Ashmolean Museum showcasing the diverse range of Oxford-based researchers and performers who are connected to Japan.

Come and try your hand at woodcut printing, or why not learn some Japanese? Listen to the performers in the central atrium, and connect with new and interesting aspects of the arts and culture of Japan.



SEASON FINALE
DRUMMERS UNITE
 Joji Hirota & London Taiko Drummers with Saprk!
Monday 29 November
6pm
Radcliffe Humanities Quarter

The event will enable us to celebrate the end of the Japan Season with a large scale public performance, and an opportunity to thank everyone involved.

Joji Hirota Highly regarded and well established Japanese traditional and contemporary taiko drumming group, founded in the 1980s.

Spark! An international LED drumming group that use street theatre, live performance and a lighting spectacular to transform the landscape around them.

Supported by



Book Now

Book Now

Book Now

Book Now

Book Now



Tokyo: Art in Conversation
 Online Premiere

Friday 15 October
 5pm

Enrico Isamu Oyama, visual artist, in conversation with **Lena Fritsch**, Ashmolean Museum, and **Jason Waite**, Ruskin School of Art, recorded in the gallery at the Ashmolean.

Enrico Isamu Oyama creates visual art in various mediums that features Quick Turn Structure: the motif composed of spontaneous repetition and expansion of free flowing lines influenced by aerosol writing of 1970's-80's New York and beyond.

Watch



Anagama Kiln Firing
 Livestream

Wednesday 20 October
 from 1pm (BST)
Firing from 8 October for 8-10 days.

Based in Oxford's Wytham Woods, the traditional Anagama (or 'Cave') Kilns were recreated together with expert potters from Japan, **Dr Robin Wilson**, and **artists from Whichford Pottery**.

The firing includes 200 pieces from local and international potters, and a local school group, creating work fired in this traditional method. A few pieces will be selected for display in the Ashmolean Museum in late 2021, with a larger selection exhibited in the Japanese Embassy in London in early 2022.

Watch



Marewrew Performance
 Online Premiere

Friday 22 October
 5.00-5.30pm

Marewrew, meaning 'butterfly' in the Ainu language, is a celebrated vocal group of women artists whose goal is to keep the tradition of 'Upopo' songs from the Ainu people of northern Japan, alive and thriving.

Regular performers at WOMAD and other international festivals, they released their 3rd album 'Mike Mike Nociw' in 2019, and in 2020 found new audiences with a song for the Netflix horror movie 'Ju-On: Origins.'

Our special premiere was curated and recorded earlier this year in Japan by Eiko Soga. (Ruskin School of Art).

Watch

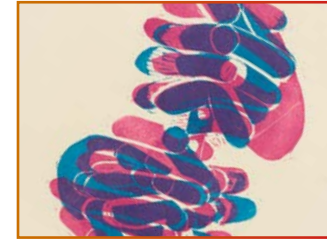


Tea Ceremony
 Live Online

Tuesday 26 October
 11am-12.30pm

Incoming 'Grand Tea Master' 'Iemoto' of the Sado Hosokawa school and Kado (Ikebana) Hosokawa Mishi school in Kyoto, **Yuki Okamoto**, explores ways to introduce the traditional art of the tea ceremony to contemporary audiences. He is particularly keen to offer this opportunity to overseas audiences. The online format provides both an intriguing way for people to engage closely in this process, and to make their own tea at home, while seeing the tea ceremony room, and appreciating the cultural and mindful qualities of the ceremony: a special treat in these COVID times.

Watch



In Praise of Hands
 Online Premiere

Tuesday 23 November
 1pm

Artist, **Naoko Matsubara** in conversation with **Dr Clare Pollard**, Ashmolean Museum, poet, **Penny Boxall**, and **Prof Wes Williams**, Humanities (French).

Over many decades, artist Naoko Matsubara (b. 1937) has been working on a series of woodcuts exploring the human hand — engaged in sport, dance, music, prayer and a variety of creative acts. We celebrate here the remarkable collaboration between Naoko Matsubara and prize-winning poet Penny Boxall.

Watch



Cherry Trees
 Online Premiere

Tuesday 21 December 2021
 1pm

Alice Oswald, Oxford Professor of Poetry, and **Katie Mitchell**, Theatre Director and HCP Visiting Fellow, met in the Botanic Gardens in Oxford to explore their work connected to the lives of Cherry Trees and their interwoven cultural lives in Japanese narratives. We recorded their conversation and share it online as a premiere.